

UPP-1200

310000mAh 992Wh 1200W

1200W Portable Power Station is a 992Wh LiFePO4 portable power station and is a compact, self-contained unit that provides a reliable power source wherever you go. With its lightweight design, you can easily carry it on camping trips, picnics, or even to the beach. It's also a great backup source during power outages or other emergencies.



US

- Output up to 10 devices
- Safe and Reliable / Plug and Play / Quiet Operation / Long Cycle Life
- Home Backup power
- OEM & ODM Available



EU AU UK UN CH ZA

Technical Specification

OUTPUT

AC Output	Rated voltage	100~120Vac/220~240Vac
	Rated power	1200W
	Peak power	3600W
	Frequency	50/60Hz
DC 12V Output (cigarette lighter)	Rated voltage	12V
	Rated current	10A
USB-A output	5V/3A; 9V/2A; 12V/1.5A (18W Max)	
USB-C output	5V/3A; 9V/3A; 12V/3A; 15V/3A; 20V/3A (60W Max)	
USB-C output	5V/3A; 9V/2A; 12V/1.5A (18W Max)	
LED Light	7W Three Working Mode	

INPUT

Input voltage	12V~30V
Input power	200W MAX

BATTERY

Rated capacity	992Wh
Rated voltage	32Vdc
Battery cell type	LiFePO4

GENERAL

Waterproof	IP21
Working temperature	0-40°C
Size	330*220*289mm
Net weight	11kg



UPP-1800

465000mAh 1488Wh 1800W

1800W portable power station, with its impressive 4000W peak power output, can run small refrigerators, electric stoves, heaters, and even power tools. Plus, it's designed to be lightweight and portable, so you can take it with you wherever you go.



43" TV (60W)	Coffee Maker (1000W)	Microwave (1300W)	CPAP (40W)	Mini Fridge (60)	Laptop (60Wh)	Projector (100W)	Electric Grill (500W)
10.5H	1.2H	0.9H	63H	21WH	21X	12.6H	2.5H



Technical Specification

OUTPUT		
AC Output	Rated voltage	100~120Vac/220~240Vac
	Rated power	1800W
	Peak power	4000W
	Frequency	50/60Hz
DC 12V Output (cigarette lighter)	Rated voltage	12V
	Rated current	10A
USB-A output	5V/3A; 9V/2A; 12V/1.5A (18W Max)	
USB-C output	5V/3A; 9V/3A; 12V/3A; 15V/3A; 20V/3A (60W Max)	
USB-C output	5V/3A; 9V/2A; 12V/1.5A (18W Max)	
LED Light	7W Three Working Mode	
INPUT		
Input voltage	12V~30V	
Input power	2*200W MAX	
BATTERY		
Rated capacity	1488Wh	
Rated voltage	32Vdc	
Battery cell type	LiFePO ₄	
GENERAL		
Waterproof	IP21	
Working temperature	0-40°C	
Size	385*243*340mm	
Net weight	15kg	

- Output up to 10 devices
- Safe and Reliable / Plug and Play / Quiet Operation / Long Cycle Life
- Home Backup power
- OEM & ODM Available



UPP-2400

697500mAh 2232Wh 2400W

2400W portable power station, with a massive 2232-watt-hour capacity, this portable power station can easily power all your essential appliances and devices, including refrigerators, power tools, laptops, and even small appliances like blenders and coffee makers.



US

- Output up to 14 devices
- Safe and Reliable / Plug and Play / Quiet Operation / Long Cycle Life
- Home Backup power
- OEM & ODM Available



EU AU UK UN CH ZA

Technical Specification

OUTPUT

AC Output	Rated voltage	100~120Vac/220~240Vac
	Rated power	2400W
	Peak power	5000W
	Frequency	50/60Hz
DC 12V Output (cigarette lighter)	Rated voltage	12V
	Rated current	10A
USB-A output	5V/3A; 9V/2A; 12V/1.5A (18W Max)	
USB-A output	5V/2A;	
USB-C output	5V/3A; 9V/3A; 12V/3A; 15V/3A; 20V/3A (60W Max)	
LED Light	7W Three Working Mode	

INPUT

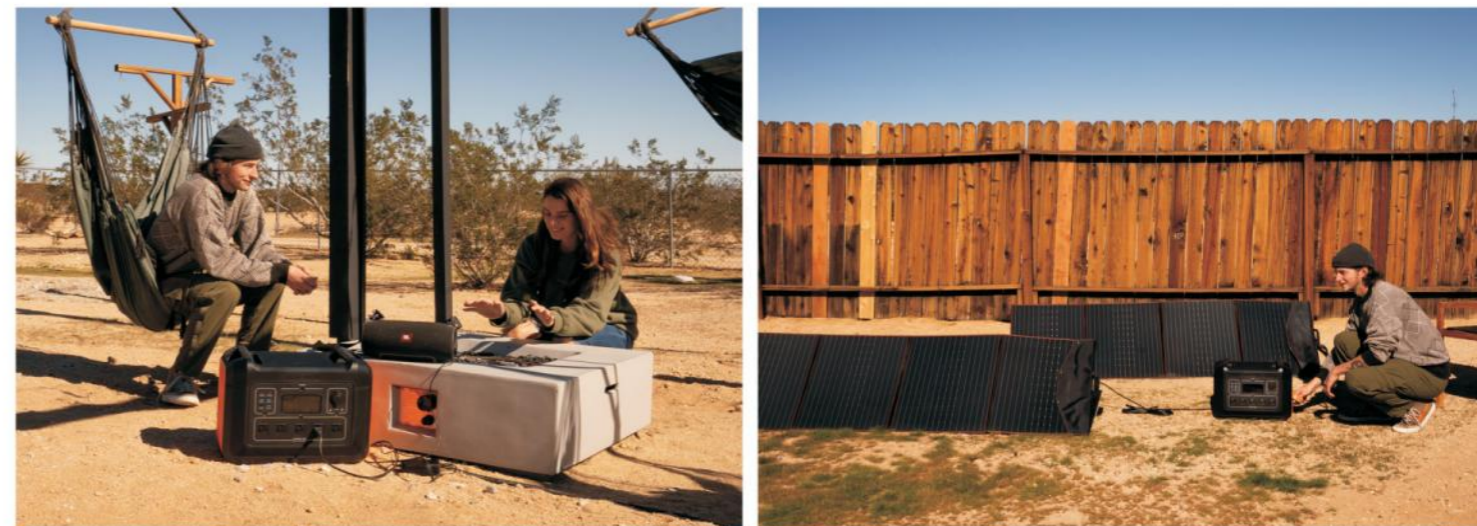
Input voltage	12V~45V
Input power	2*24V/200W; 2*28V/300W; 2*45V/500W

BATTERY

Rated capacity	2232Wh
Rated voltage	48Vdc
Battery cell type	LiFePO ₄

GENERAL

Waterproof	IP21
Working temperature	0-40°C
Size	420*270*313mm
Net weight	20.7kg



S 5

1575000mAh 5040Wh 5000W

The 5000W portable power station, equipped with a large battery capacity, high power output, and various outlets to support multiple devices, comes with advanced features, such as fast charging, UPS function, and advanced battery management systems.



- Output up to 15 devices
- Fast charging - 2 Hours charge to 5000Wh
- UPS function Available
- APP Remote Control
- Connect Extra Battery to 10KWh
- OEM & ODM Available



US ZA AU UK UN CH

Technical Specification

OUTPUT

	Rated voltage	220~240V
	Rated power	5000W
AC Output	Peak power	7000W
	Frequency	50/60Hz
DC 12V Output (cigarette lighter)	Rated voltage	12V
	Rated current	10A
USB-A output	5V/3A; 9V/2A; 12V/1.5A; (18W Max); 5V/2A	
USB-C output	5V/3A; 9V/3A; 12V/3A; 15V/3A; 20V/3A; (PD60W Max)	
Anderson output	12V/30A	

INPUT

AC Charge Input	200-240Vac 16A Max 2500W Max	
PV(Anderson)Input	12~150Vdc MPPT:18V-140V 15A Max 2250 Max	

BATTERY

Rated capacity	5040Wh
Rated voltage	48Vdc
Battery cell type	LiFePO ₄

COMMON INFORMATION

Waterproof	IP21
Working temperature	0-40°C
Size	641.5 * 304.5 * 437.5mm
Net weight	50kg





S3

96000mAh 3072Wh 3600W



Specifications

OUTPUT

AC Output :	100-120V/220-240V,3600W Max
Inverter Type :	Pure Sine Wave
Surge Power :	7000W
USB-C Port :	5V / 3A ; 9V / 3A ; 12V / 3A ; 15V / 3A ; 20V / 5A(100W Max)
USB-A Port :	5V / 3A ; 9V / 2A ; 12V / 1.5A(18W Max); 5V / 2A
DC 12V Output :	12V / 10A
Anderson Output :	12V / 30A

INPUT

AC Input :	2000W Max.(100-120V);2500W Max.(200-240V)
PV Input :	2100W Max

BATTERY INFO

Capacity :	3072Wh(51.2V,60Ah)
Cell Chemistry :	LiFePO ₄
Lifecycle :	3000+ Cycles to 80% Original Capacity

GENERAL

Weight :	43kg
Dimension :	641.5*304.5*437.5mm
Operating Temperature :	0-40°C
Certification :	UL / CE / FCC
Waterproof :	IP21
Warranty :	3 Years

Output up to **15** devices
Fast Recharging-1.5 hours charge to 3072Wh



Seamless UPS Backup



App Remote Control



Multiple Fast Recharging Ways(0-80%)

WALL OUTLET(Max 2000W)
1.2 Hour

6*(220W)SOLAR PANEL(Max 2100W)
1.1 Hour



Expand your power at will
Up to 33792Wh with 15pcs S2-BAT

3072Wh
2048Wh
5120Wh
3072Wh



Power for 95% Appliances

Microwave (1300W) 2.7 ⁺ Hrs	Tablet PC (30Wh) 87 ⁺ Charges	Laptop (50Wh) 43.5 ⁺ Charges	Light (10W) 281.1 ⁺ Hrs
Mini Cooler (50W) 52.2 ⁺ Hrs	Electric Frying Pan (1200W) 2.2 ⁺ Hrs	Washer (500W) 6.2 ⁺ Hrs	Hair Dryer (1600W) 1.6 ⁺ Hrs
TV (110W) 23.7 ⁺ Hrs	CPAP (40W) 65.2 ⁺ Hrs	Coffee Maker (1000W) 2.6 ⁺ Hrs	Drone(50Wh) 43.5 ⁺ Charges



S 5-BAT

1575000mAh 5040Wh

High-performance Extra LiFePO4 Battery, this battery gives you an extra boost of power you need to keep your appliances running, designed with lithium-iron-phosphate technology, this battery is highly durable, efficient, and safe. It also boasts a long lifespan of up to 10 years with minimal maintenance required.



Technical Specification

BATTERY

Rated Capacity	5040Wh
Rated Voltage	48Vdc
Battery Cell type	LiFePO4
Life Cycles	>3500 Times

GENERAL

Waterproof	IP21
Working temperature	0-40°C
Size	641.5 * 304.5 * 437.5mm
Net weight	43.8KG



S2-BAT

640000mAh 2048Wh

Specifications

OUTPUT

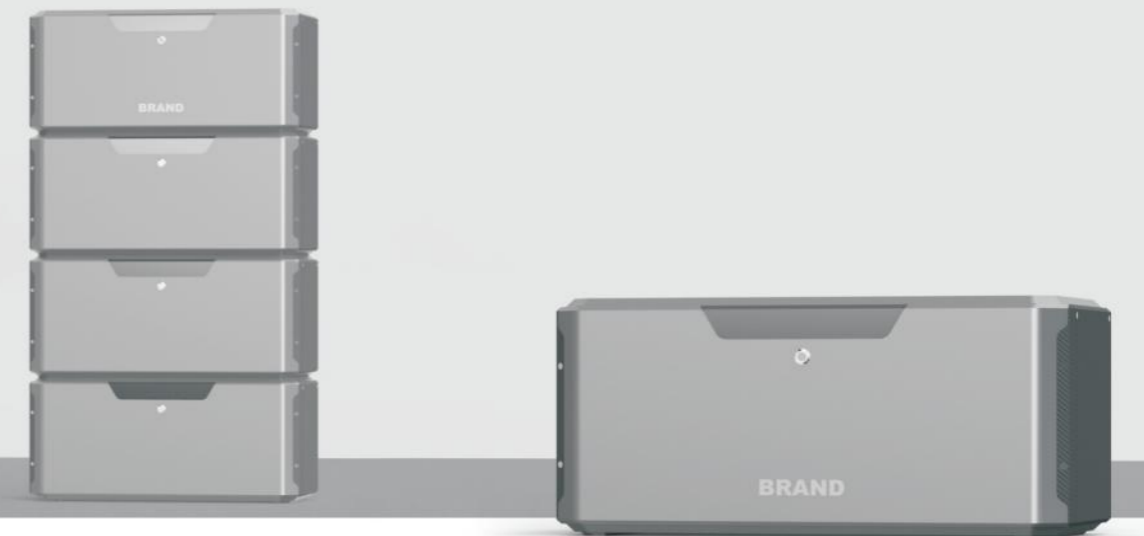
USB-C Port :	5V / 3A ; 9V / 3A ; 12V / 3A ; 15V / 3A ; 20V / 5A(100W Max)
USB-A Port :	5V / 3A ; 9V / 2A ; 12V / 1.5A(18W Max); 5V / 2A
DC 12V Output :	12V / 10A
Anderson Output :	12V / 30A

BATTERY INFO

Capacity :	2048Wh(51.2V,40Ah)
Cell Chemistry :	LiFePO4
Lifecycle :	3000+ Cycles to 80% Original Capacity

INPUT

PV Input :	12-150Vd.c MPPT:18V-140V 15A Max 2100W Max
------------	--



Home Battery Storage (5Kwh Battery)

Developing

Battery Info

Voltage :	48V
Capacity :	5040Wh
Max Capacity :	Up to 75.6Kwh with 15pcs Batteries

PV-100

The SOUOP-100 solar panels can be folded and bundled for easy carrying and use. It can make full use of sunlight and convert sunlight into clean energy.



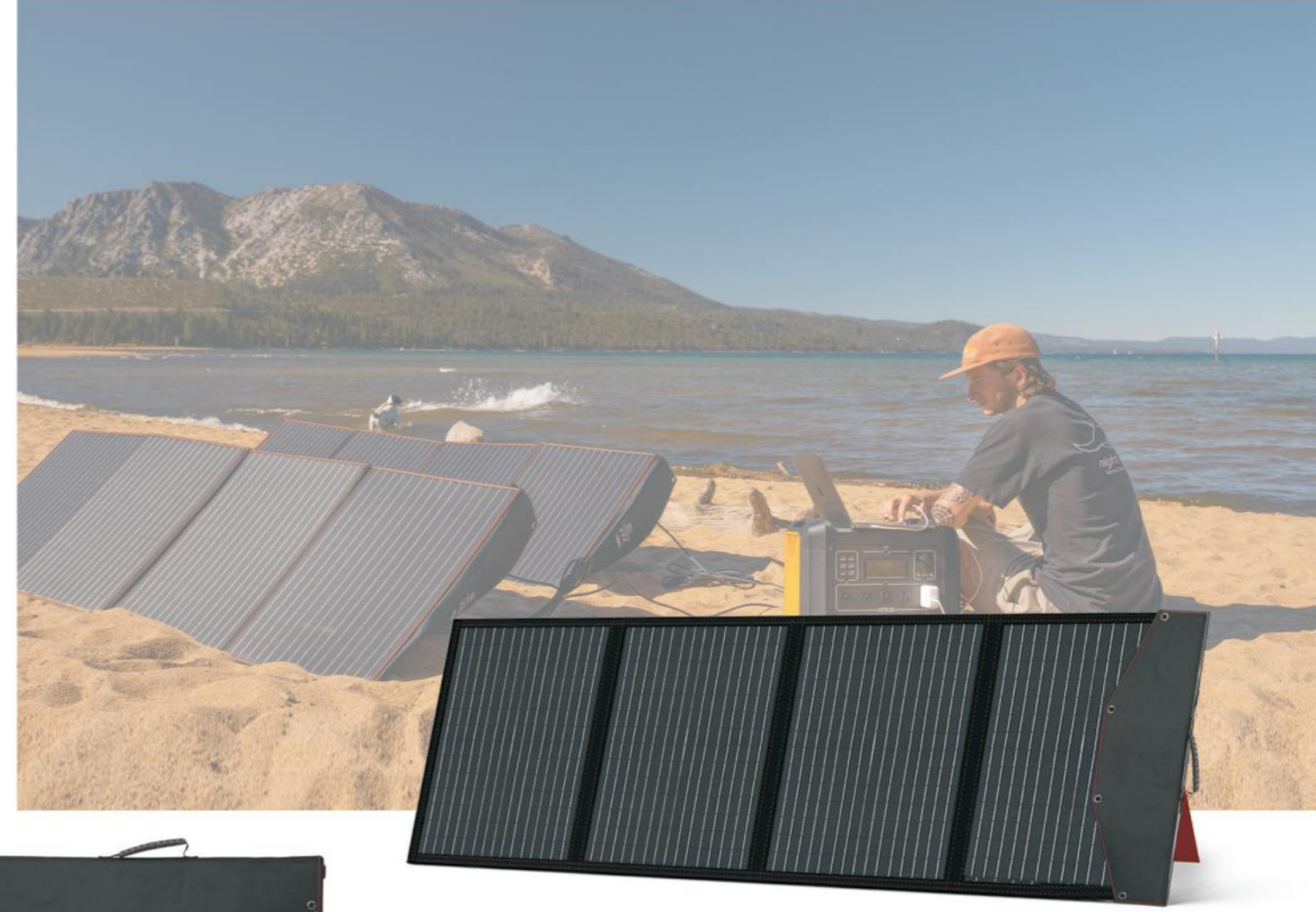
- Solar Cell: Monocrystalline Silicon
- Easy to transport and set up
- OEM & ODM Available

Technical Specification

Type	Monocrystalline Silicon
Output Power	100W
Cell Efficiency	20~22%
Power Volage	19.8V
Power Current	5A
DC Output	18V/100W
Dimensions	415*370*35mm(folded) / 1670*415*5mm(unfolded)
Net Weight	3.6kg

PV-220

The SOUOP-220 solar panels can be folded and bundled for easy carrying and use. It can make full use of sunlight and convert sunlight into clean energy.



- Solar Cell: Monocrystalline Silicon
- Easy to transport and set up
- OEM & ODM Available

Technical Specification

Type	Monocrystalline Silicon
Output Power	220W
Cell Efficiency	20~22%
Power Volage	19.8V
Power Current	12.1A
DC Output	18V/220W
Dimensions	655*520*35mm(folded) / 2290*655*5mm(unfolded)
Net Weight	8.4kg

CB1200/CB1800

Carrying bags specially designed for SOUOP 600W and 1200W portable power stations.



- Insulation
- OEM & ODM Available
- Water Proof / Padded Lining / Tear Resistant

Travel Carrying Bag and Trolley

Dimension	390*440*650mm / 420*280*100mm
Net weight	1kg / 1.5kg
Suitable for	600W / 1200W / 1800W Portable Power Station



T2400

This Trolley features go-anywhere wheels and a retractable handle with a quick one-banded button operation on top.



- Smooth and lightweight
- Retractable handle

Travel Carrying Bag and Trolley

Dimension	575*195*555mm
Net weight	3.9kg
Suitable for	2400W Portable Power Station

