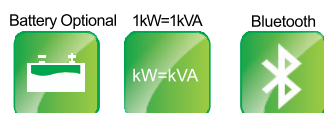


REVO VM II Pro Series

Off Grid Energy Storage Inverter

3.5-5.5KW



Product Snapshot

Model: 3.5KW/5.5KW

Nominal Voltage: 230VAC

Frequency Range: 50Hz/60Hz

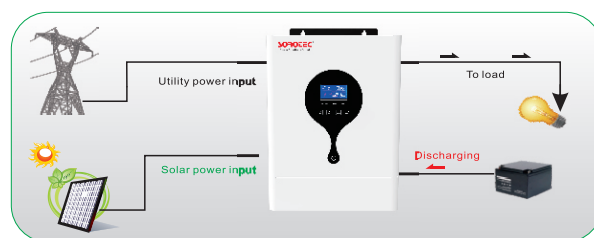
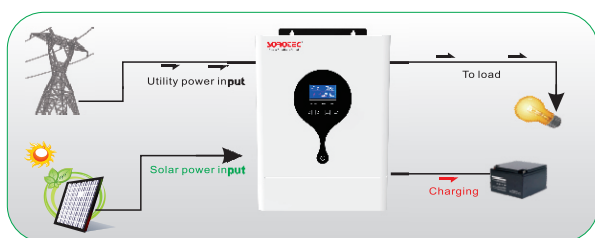


Key Features:

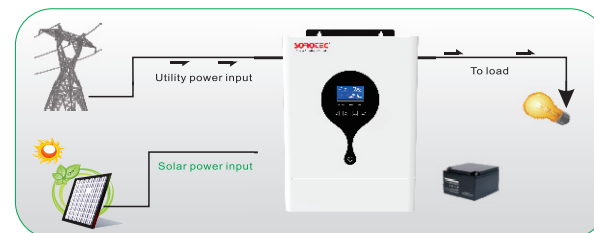
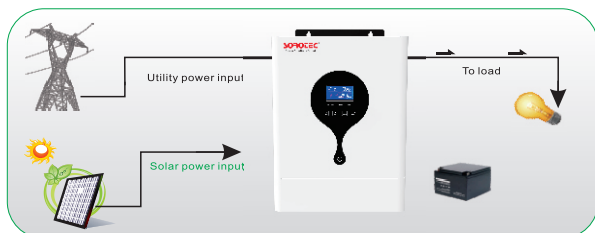
- Pure sine wave MPPT solar inverter
- High PV input voltage range
- Built-in 100A MPPT solar charger
- With Touch Buttons
- Built-in anti-dusk kit for harsh environment
- Support lithium iron battery
- Battery equalization function to optimize battery performance and extend lifecycle
- Reserved communication port (RS485, CAN-BUS or RS232) for BMS (Optional)

Hybrid Operation

With battery connected



Without battery connected



Features



Discharge current limit protection



Impact protection



Over temperature protection



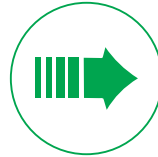
Low voltage protection



Overload protection



Short circuit protection



Overcurrent protection



High voltage protection

REVO VM II Pro Series

Wall Mounted Integrated Solar Inverter Technical Specification
Built-in MPPT Solar Controller

| MODEL | REVO VM II Pro 3500-24 | REVO VM II Pro 5500-48 |
|---------------------------------------|---|------------------------|
| Rated Power | 3500VA / 3500W | 5500VA / 5500W |
| INPUT | | |
| Voltage | 230 VAC | |
| Selectable Voltage Range | 170-280 VAC (For Personal Computers) ; 90-280 VAC (For Home Appliances) | |
| Frequency Range | 50 Hz/60 Hz (Auto sensing) | |
| OUTPUT | | |
| AC Voltage Regulation (Batt. Mode) | 230VAC \pm 5% | |
| Surge Power | 7000VA | 11000VA |
| Efficiency (Peak) | up to 93.5% | |
| Transfer Time | 10 ms (For Personal Computers) ; 20 ms (For Home Appliances) | |
| Waveform | Pure sine wave | |
| BATTERY | | |
| Battery Voltage | 24 VDC | 48 VDC |
| Floating Charge Voltage | 27 VDC | 54 VDC |
| Overcharge Protection | 33 VDC | 63 VDC |
| SOLAR CHARGER & AC CHARGER | | |
| Maximum PV Array Open Circuit Voltage | 500 VDC | 500 VDC |
| Maximum PV Array Power | 5500 W | 5500 W |
| MPPT Range @ Operating Voltage | 120~450 VDC | 120~450 VDC |
| Maximum Solar Charge Current | 100 A | 100 A |
| Maximum AC Charge Current | 80 A | 80 A |
| Maximum Charge Current | 100 A | 100 A |
| PHYSICAL | | |
| Dimension, D x W x H (mm) | 400*300*115 | 400*300*115 |
| Net Weight (kgs) | 8.5 | 9 |
| Communication Interface | USB/RS232 | |
| ENVIRONMENT | | |
| Humidity | 5% to 95% Relative Humidity (Non-condensing) | |
| Operating Temperature | -10°C to 50°C | |
| Storage Temperature | -15°C to 60°C | |

Note: Product specifications are subject to change without further notice.
SSI20-000008-19